



Leanwrap™

Less Waste, Safer Loads!

Patented and patent pending innovations that overcome today's stretch wrapping challenges!



SL Automatic
Stretch Wrapping System

Loads are Harder to Wrap Than Ever!

Today's stretch wrapping challenges have spawned an epidemic of fragile and demanding loads that are harder than ever to wrap. Yesterday's technology doesn't give you the tools to know if your loads are safe to ship.

So we reinvented stretch wrapping.

Our exclusive, patented LeanWrap features give you what you need to manage the performance of your loads and overcome today's stretch wrapping challenges.

Stop breaking stretch film. Stop twisting loads. Stop loads from sliding off the pallets. Stop destructive film tails. Stop guessing if your loads are safe to ship.

Take control of your stretch wrapping.

LeanWrap technology gets you less waste and safer loads.

The right containment force applied consistently is the key to stretch wrapping success.



Good Loads

- Containment force is at or above the minimum requirement everywhere on the load.
- The load is bonded to the pallet with 3-5 inches of film rolled into a cable.
- Looks good. No long or dragging film tails.

“Good loads are safe to ship.”

Lantech®

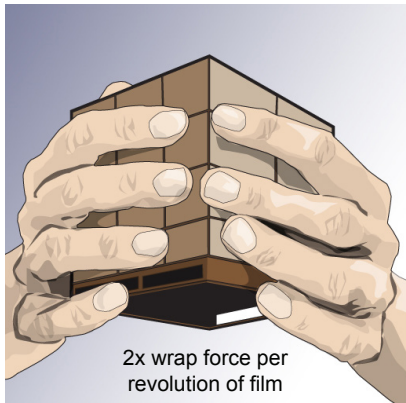
SL Automatic

Exclusive LeanWrap Innovations



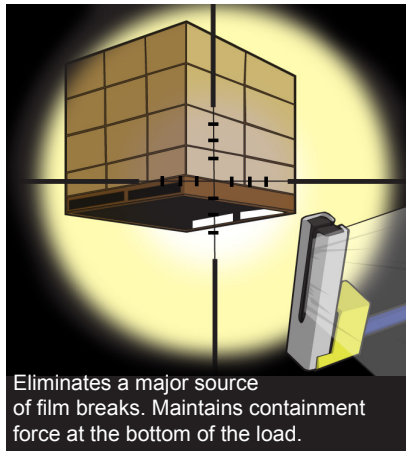
Metered Film Delivery® System

- No Load Twisting
- No Load Crushing
- No Film Breaks



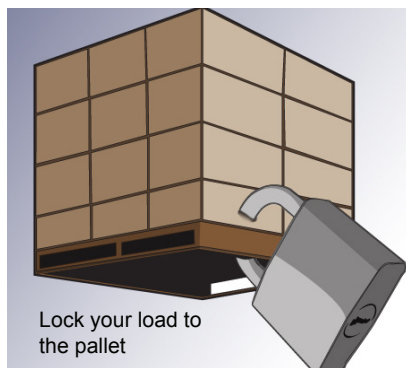
Load Seeking Clamp® 4.0

No loose or dragging film tails



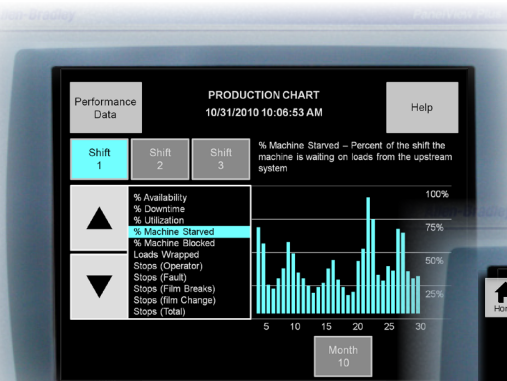
Pallet Grip®

Stop loads from sliding off the pallet



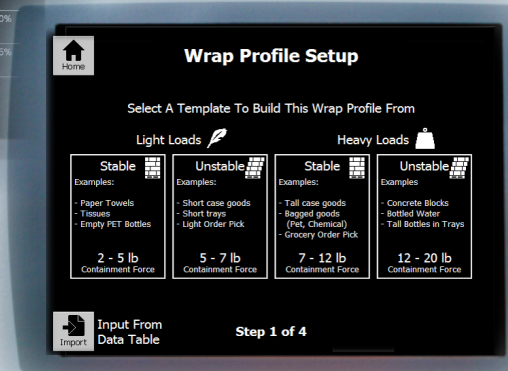
Load Guardian™

Simplifies the process of setting up a stretch wrapper to effectively wrap loads. Containment force monitoring ensures every load has the right amount of containment force. The intuitive interface has a host of other key stretch wrapping data and help screens.



Stop Guessing!

Knowledge is Power!



Specifications

PERFORMANCE CRITERIA

| | |
|---------------------|-------------------------------------------|
| Production Speed | 20-90 loads per hour based on load height |
| Maximum Load Size | 58" L x 58" W x 80" H |
| Minimum Load Size | 36" L x 36" W x 24" H |
| Maximum Load Weight | Conveyor Capacity |

LOAD HANDLING SYSTEM

| | |
|----------------|---------------------------------------------------------|
| Rotation Drive | TEFC AC Motor |
| Rotation Speed | 1-40 RPM controlled by VFD (depending on machine model) |

FILM DELIVERY SYSTEM

| | |
|--------------------|------------------------------------------|
| Film Capacity | 20" web with 10" diameter |
| Film Cut and Clamp | Load Seeking Clamp™ impulse hot wire cut |
| Pallet Grip | Standard |

CONTAINMENT FORCE TOOL

CFT-5 with Film Scale and Holder

ELECTRICAL DATA

| | |
|-----------|-------------------------------------|
| Enclosure | NEMA 12, UL |
| Power | 460VAC/3/60Hz |
| | 10K SCCR w/breakers |
| Control | PLC with Ethernet Communication |
| HMI | Touchscreen |
| Wiring | Pre-wired with quick connect cables |

PNEUMATIC DATA

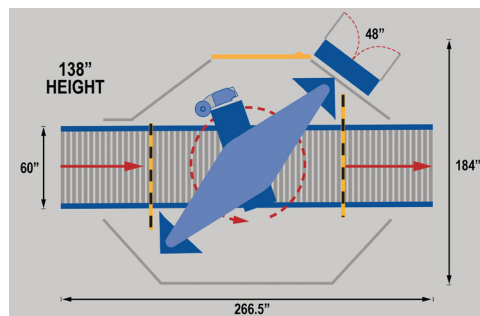
| | |
|------------------|----------------------|
| All Requirements | 3-5 CFM at 60-80 PSI |
|------------------|----------------------|

SHIPPING WEIGHT

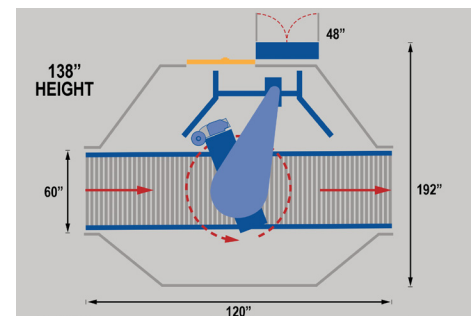
| | |
|--------------|------------|
| Machine Only | 4,300 lbs. |
|--------------|------------|

SERVICE SUPPORT

| | |
|-------------------|--------------------------|
| Warranty | 3 years unlimited cycles |
| Technical Support | 24 hrs/7 days a week |



SL Automatic - 2 Legs



SL Automatic - 1 Leg

MEMBER
PMMA
USA

Specifications subject to change without notice. Lantech systems and sub-systems are protected by U.S. and foreign patents. Additional U.S. and foreign patents pending. © Lantech.com 2012